

FIRST UNITED METHODIST CHURCH NEWS

FEBRUARY 2012

OPEN HEARTS, OPEN MINDS, OPEN DOORS

VOLUME 2 ISSUE 8

Ash Wednesday Service

Our annual Ash Wednesday Service of Communion and Imposition of Ashes will be on Wednesday, **February 22** at 7:00pm in the Sanctuary. We will begin this holy season around the Lord's Table. Please join us for this special service to begin the six weeks of preparation for the celebration of Easter. UMW will serve a pancake supper at 5:30pm prior to the service.



Lenten Study Planned

Rev. Brewer will be leading a six-Sunday Lenten Study based on the book, "Three Simple Questions" by Reuben Job. A few years ago we had a study based on his earlier book, "Three Simple Rules"; this new study seeks to answer three profound, but simple, questions:

- Who is God?
- Who am I?
- Who are we together?

The study will be held in the Parlor on Sunday afternoons, 4:00-5:30pm beginning Sunday, February 26. Please join us! Books will be available for \$6.00 each.

2011 Mission Shares Paid In Full

Again for 2011, First Church has met our Mission Share goal for the support of mission and ministry in The United Methodist Church in Nebraska and around the world. Your generous contributions have made it possible for us to provide spiritual growth, education, health and healing, food, and most importantly, the Good News of Jesus Christ to people both near and far. See the "Note of Thanks from Bishop Ann B. Sherer-Simpson" located elsewhere to read her thanks for our efforts.

New Member Orientation

Want to know more about The United Methodist Church? Are you considering becoming a member of First Church and want to make an informed decision? Want to know some of what we as United Methodists believe, or how we do things? On Sunday afternoon, February 5, from 1:30 to 4:30 (After the Congregational Dinner), you are invited to attend a New Member Orientation in the Fellowship Hall of First Church. Rev. Brewer will share information about the beliefs, history, structure and activities of our denomination and church for all who want to know more. Please mark on your Yellow Sheet in worship if you are planning to attend.

Consecration Sunday Is Coming

Congregations that approach financial stewardship from a biblical perspective do not view the money Christians give to their church merely as a way to pay its bills. Rather, such congregations see financial contributions as a way to help people grow spiritually in their relationship with God by supporting their church's mission and ministry with a percentage of their incomes.

Our congregation's finance committee has selected the *New Consecration Sunday Stewardship Program* as a way to teach the biblical and spiritual principles of generous giving in our stewardship education emphasis this year.

New Consecration Sunday is based on the biblical philosophy of the need of the giver to give for his or her own spiritual development, rather than on the need of the church to receive. Instead of treating people like members of a social club who should pay dues, we will treat people like followers of Jesus Christ who want to give unselfishly as an act of discipleship. *New Consecration Sunday* encourages people toward proportionate and systematic giving in response to the question, "What percentage of my income is God calling me to give?"

During morning worship on Consecration Sunday, we are asking our attendees and members to make their financial commitments to our church's missionary, benevolent, and educational ministries in this community and around the world for the year 2012.

Every attendee and member who completes an *Estimate of Giving Card* does so voluntarily by attending morning worship on Consecration Sunday. We urge people to attend who feel strongly opposed to completing a card. The procedure is done in such a way that no one feels personal embarrassment if he or she chooses not to fill out a card.

We will do no home solicitation to ask people to complete cards. During morning worship on February 19, we will have a brief period of instruction and inspiration, climaxed by members making their commitments as a confidential act of worship.

We will encourage participation in Consecration Sunday events through the Consecration Sunday team and governing board members. Since we will make no follow-up visits to ask people to complete their cards, we will make every effort to inform, inspire, and commit everyone to attend Consecration Sunday worship.

Thanks in advance for your enthusiastic participation in Consecration Sunday events.
Lorraine Naslund, Church Council Chairperson

I've made a commitment to Living Our Vision; How Do I Get Credit?

First, thank you for your support for Living our Vision. As of January 22, over \$1,113,000 has been committed to the project to build an elevator for our building and expand the Narthex/Entry area. Our Trustees and architects are working together on the final plans so builders can give us their estimates for the cost of this construction.

If you have made a commitment to Living Our Vision, you should have received a letter thanking you for your commitment with details about what you have committed and your payment intentions. In order for you to get proper credit for your giving, and to keep Living Our Vision gifts separate from all other giving to the church, here are some ways you can do it:

- If you use the offering envelopes that are mailed out, you will notice that the 2012 envelopes include a new line for "building fund." If you indicate on that line the portion of your gift that is designated to Living our Vision, it will be credited that way. The offering envelopes in the pews will soon have that line as well.
- If you write a check to the church, you can either note on the memo line how much you are designating to Living our Vision and to other causes, or you can write separate checks for your general fund giving and Living Our Vision.
- You can also include a note with your gift designating what funds you want to give to.
- Automatic deposit is also available for all gifts to First Church; contact Juli Rahfeldt in the church office to set that up.

Please be sure to indicate your envelope number (printed on the quarterly giving statements or available by calling Juli Rahfeldt) on all checks; this speeds recording of your gifts. Thank you again for your support for the mission and ministry of First United Methodist Church.



THE CHURCH IN MISSION

WE ARE STEPPING UP TO STAMP OUT CHILD ABUSE

The Mission Committee invites you to participate in our February mission project, which consists of donating new or lightly used shoes of any size. You can donate your shoes by placing them at our display area in the front entryway. These shoes will be used for the 'Walk A Mile in Our Shoes' Child Abuse Prevention Shoe Display Project sponsored by the Norfolk Council for Family Empowerment and Northern Nebraska Early Learning Connection Partnerships. These shoes will be used to represent the number of cases (450) of child abuse that have been reported in the last year in our area. Following displays around the area, all the shoes will be donated to a family serving project.



Special Sunday Offerings –

Our Human Relations Day offering totaled \$ 301.00 as of January 23rd. Thank you for your gifts!

Community Garden –

Applications are now available in the office for the 2012 growing season and must be turned in by April 1st. Plots sizes are 10x10 and 10x20. Forms are also available in Spanish. Spread the word!

Recycling at FUMC-

Be good stewards of our earth. Please continue to bring your paper, magazines, phone books, paperbacks, and cardboard to our Green Fiber bin located in the west parking lot next to the alley.

VIM Opportunity-

A Volunteer in Mission trip to Kenya is being planned for June 20-July 5, 2013, by the Alliance United Methodist Church. If you have an interest in being involved in this mission trip, or offering help or resources, please see Cheri for more information.

Equal Exchange /Fair Trade-

We are offering a **new way** to purchase Equal Exchange. Product order blanks are now available in the narthex. Get together with your friends, co-workers, Sunday school class, UMW or other group, as we will now be taking orders throughout the month for case lots. Please turn in your order including payment to Cheri or the church office. We will place an order the first of each month. We will continue to keep some items in stock at the church office. You can also go directly online to purchase items at: www.equalexchange.coop/umcor. Please consider purchasing these products for your church and family to make a difference for small family farmers.

HOSPITALITY MINISTRIES

Help Us 'Open our Doors'!

We REALLY need more greeters! Especially as we start the construction process this coming spring. Greeters have a different responsibility than ushers. Greeters stand at the entry doors of the church and greet people as they enter the building. They are the people who help new folks feel welcome and find their way, or make the regulars feel loved and cared for every week.

Greeters are our front-line ministers of welcome and are VITAL to the health of our church. If you can help in this ministry, or you have questions about it, please contact the church office, or sign up on the volunteer board in the parlor.

Blessing Bears

Please consider sharing a Blessing Bear from the basket in the front of the sanctuary for a little one who needs comfort or just a little extra care. The rumor is that 'adult' children love them, too!

Church Nametags

We would like everyone to wear church nametags, especially if you are a greeter, usher, or have other regular volunteer positions in the church. Nametags are a very helpful tool in being a welcoming church. If you would like to have a nametag, please contact Juli at the church office. *If you can help offset the cost, they are about \$3.00 each.*

GREETINGS FROM THE PASTOR



Rev. James S. Brewer

I hope you are taking advantage of our Web page: www.norfolkumc.org. It's a valuable resource and connection to many other resources:

- Through the newsletter links you can contact the church staff
- You can see the ministries we are involved in, and find new ways you can be a part of them
- When is a meeting, or a special service, or an event? The calendar gives you that information and more
- Want to connect with the Nebraska United Methodist Conference, or learn about UMCOR, or many other resources? Check out the Links on our webpage.
- One of the great strengths of First Church is the tremendous number of volunteers, and their great vitality. On the Volunteer link, you can find ways to be a part of that volunteer network.
- Our newsletters are now being attached to the web page, so if you want to know what was in a previous newsletter, you can check it out.

Tammy Brabec, our Administrative Assistant, is also our Webmaster, and she is doing a great job keeping the website current, fresh, and interesting. You need to check it out frequently to see the new things going on at the church!

During the month of January we have been doing a little survey about communications in the parish, and part of it is to find out who would like to receive their newsletter electronically. The cost for paper, ink, and postage continues to climb, and sending the newsletter electronically will save your church money that can be used to reach others for Christ, so we encourage you to receive the newsletter electronically.

I personally am always behind the electronic times. I don't use Facebook, for instance, but many people in our church do, and the church and youth Facebook pages help keep our communities connected. Cheri Kneifel does a great job keeping those pages up to date. If there are other groups in the church who would like to establish a Facebook page, contact Cheri for her assistance.

Of course, we will continue to provide information through a printed Newsletter and the printed Mini News which is in the weekly worship bulletin. As we expand our communication methods, we work to develop new friends for First United Methodist Church.

Memorials***In Memory of Jack & Betty Thomas****Given by Rodney Thomas****In Memory of Gloria Earl****Given by Diane Carney****In Memory of Donnie Thomas, Brady Hahn & Dorothy Frank****Given by Delores Munson****In Memory of Delores Robertson***

Given by Bill & Chera-Lee Avery, Robert & Joy Bierbaum, Larry & Donna Niemeyer, Arthur Robertson, Rene & Neal Bierbaum, Lowell Aspegren, Donald & Shirley Engel, Larry & Colleen Jacobson, Marvin Welstead, Hilda Wittman, Barbara Yost, Sharon Fingold/Antonio Martinez/Michael & Nathan Martinez, LaRene Konopasek, Marian Gilsdorf, Mrs. Eugene Stork, Ruth Schmer, Louise Voss, Madeline Suess, Liz Mashell, Mabel Siegert, Bob & Sherol Stone, Betty Cushing & families, Clyde & Diana Frank, Patty Stevens, Ton & Karen Osborn, Terry & Marsha Robertson, Dick Wiota, Betty Poore, Dean & Charlene Voss, Tom & Barb Bradford, Linda Slater, Carl & Caroline Mandel, Harold & Bobbie Cushing, Barb & Larry Koenen & family, Marilyn Ditrack, Jewel Piper, Porter Reiman, Jim & Kim Setina and Meta Giesselmann.

Honorariums***In Honor of Pastor Jim & Carol Roettmer Brewer****Given by Earl and Charlotte Reed****In Honor of Daniel Jr. & Elizabeth Vosburg****Given by Daniel & Raylee Vosburg***Note of thanks from Bishop Ann B. Sherer-Simpson**

Jan. 10, 2012

Today I am signing the last of our 100 percent Mission Share certificates.

I say a prayer of thanksgiving over each one. Your faithfulness to our work together across Nebraska and around the world inspires me. I am glad to be in connection in ministry with you. Together we share and enact the story of God's love and grace. A child is saved from malaria. A Mozambican pastor goes to Africa University and develops the skills she needs to be effective in his or her work. A scholarship is offered to a U.S. student who wants to attend one of the United Methodist traditionally black colleges or Wesleyan University or one of our schools of Theology such as Saint Paul [School of Theology in Kansas City] or Iliff [School of Theology in Denver].

District superintendents and staff are deployed to help local churches in their disciple-making ministry. The poor are fed and housed and those in prison experience God's love and care through a volunteer.

The list goes on and on. Together we are making a difference in the local and global mission field.

God's blessing.

Ann



Thank You

Dear FUMC Family,
 Thank you so very much for all your cards, prayers and well wishes. It was such a joy receiving your cards. The prayer shawl is absolutely gorgeous. I truly can feel your love and God's healing power when I am wrapped or covered with it. Thank you.
 Love, Deb Copple



Please Help Us Celebrate 50 Years of Wedded Bliss
 Saturday February 11th
 Magnolia Village Clubhouse
 11th and Myrtle
 Yuma, AZ
 2:00pm—4:00pm
 George and Julie Andrew
 1122 S. 20th Ave
 Yuma, AZ 85363
 Cell—402 379-1297

Youth Groups Reorganizing

The GEMS and ROCK youth groups will not be meeting for the rest of the school year to allow for reorganization of the youth ministry in the church. Please watch for news about new youth

**A Concert of Song & Story
 Ed Kail Presents:**

**“A Celebration of God’s Grace”
 Friday, February 3, 2012**

7:00 PM

**First United Methodist Church
 406 W. Phillip Ave., Norfolk, NE**

Open To The Public

An offering will be received for the Elkhorn Valley District Church & Community Project “Revitalizing Rural Congregations”

This Concert is sponsored by the Open Table of the Elkhorn Valley District of the United Methodist Church. It is offered in conjunction with the “Hope for Rural Congregations”

Aseracare Hospice is in need of hospice volunteers to provide support and companionship to hospice patients and their families in the Norfolk area. Anyone 18 years or older is encouraged to attend a free volunteer training to be held on Thursday February 16th from 5-9:30pm at the Aseracare Hospice office at 1909 Vicki Lane, Suite 110, Norfolk, NE. For more information call 1-866-300-3479 or e-mail Jeanette.hughes@aseracare.com.

**The submission deadline
 for the March
 newsletter is
 Fri. February 17th**

by 5:00 p.m.

**The March
 newsletter will be mailed
 out on**

Fri. February 24th.

**Bulletin information must
 be submitted by Tuesday
 at 5:00 p.m. of each week.
 Thanks!**

Thank You's

Thank you to Rhonda Collins for donating a number of toys to the church nursery. Your thoughtfulness is appreciated by our Little Shepherds Nursery staff!

Thanks for the awesome care packages!!! I was really excited when I opened it up!!! You guys are awesome—Allison Beutler (via FUMC Youth Facebook page)



Check us out on Facebook at:

Norfolk First United Methodist Church or Norfolk FUMC Youth.
 Please add these fan pages to your 'likes' and 'links' to help us

promote them.

If you would like to add pictures, please email them to Cheri at cherik@norfolkumc.org with pertinent information.

Also our web address is www.norfolkumc.org.

A Message from Cheri Kneifel**Organizer of Program Ministries****Give Me Some Skin!**

A young boy was in his bed for the night when a storm broke and awakened him. He called out to his father in fear. The father came to the room to calm his son's fears. "It's alright, son," he said. "God is with you." "I know that, Daddy," said the boy, "but I need somebody with skin!"

From Devotions to Leave You Smiling, by Brian Kelley Bauknight

As I reflect on the wonderful study that our church has begun on grief and loss, *Broken to Peace*, I think about times that I have suffered loss, or felt broken and alone in my life. Although I believe I have a strong faith, I know that in times of struggle I need somebody with skin!

A church family can provide those folks who will surround us with love and care when we most need it, when we don't deserve it, and when we don't even realize it. They can hold us accountable for our actions, and care for us when unfortunate circumstances cause us pain. The church is where we can find those people, because they are imperfect, just as we are, seeking wholeness and healing together.

Think of the times when you reached out in the storm, and sensed that presence of God in someone, somewhere, just when you needed it the most. And very often, YOU may be that presence...that someone with skin... for someone who needs it at a given moment. May you be blessed and be a blessing in the name of Jesus!
Cheri

EDUCATIONAL OPPORTUNITIES / SMALL GROUPS**LENTEN STUDIES- Watch the Mini-News for more details!**

Sunday afternoon study of *Three Simple Questions*, by Reuben Job

Led by Rev. Dr. James S. Brewer, starts on Sunday, February 26th from 4:00—5:30pm.

Wednesday evening study of *Forgiveness: Letting Go*, by Susan Pendleton and L. Gregory Jones,

Led by Cheri Kneifel, ACE, Starts after the Ash Wednesday Service on Feb. 22nd and continues through Mar. 28th at 7:00 PM.

****Heart to Heart: A Spiritual Journey for Women**

Attention Women! Are you looking for a women's group that provides support for each other as well as growth in your own faith? Here is a great opportunity for you! If you are interested, please fill out the registration form located on the volunteer board or on the rack in the 1st floor hallway. **When we have enough interest, we will get a couple groups started!



Heart to Heart is a refreshingly different spiritual support group in which women seek, hear, and come to understand God's will for their lives as they tell their own stories, explore Sacred stories (Bible Study), share in prayer and journaling exercises, and learn new ways to become a more spiritual person. Women who take this study together often develop bonds with others in their church family and create lasting friendships.

This 12-session program is adaptable to a 45-60 minute meeting, either over the noon hour, in the evening or even a Saturday morning. You will receive your own personal prayer journal and lots of opportunities to be creative.

Want to learn how to quilt? We have someone interested in offering a **beginning quilting class**. Would this be something you would like to attend? Or, do you have an idea for a new study or small group? Visit with me about the possibilities- Cheri

STEPHEN MINISTRY 2011

JANUARY... Midst the snow and cold we are making plans for the new year. Contact of upcoming meetings will be done by phone or e-mail. Dates were set for SM recognition Sunday and to host first Sunday Dinner at First Church.

FEBRUARY... Report was given on the Capital Fund Campaign. Information was shared on the plans for First Church remodel.

MARCH... Recognition for SM years of service was held March 13th. 23 Stephen Ministers were recognized. Lila Ritter and Rev. Dr. Charles Kathurima have both moved in the past year. A reception was held between services.

APRIL ... Discussion was held on how as Stephen Ministers we could contribute to the Worship experience. We will participate in the greeter training so we are able to help before services.

MAY... Greeters are in need at First Church. The Stephen Ministers serving Communion on Communion Sundays will also be greeters before each service.

JUNE... A paper drive was held for the Wesley Center and Crisis Nursery.

JULY... Picnic time – as usual we did this indoors in the comfort of air conditioning. Always a delightful assortment of salads, casseroles and deserts!

AUGUST... A moment of silence was held in memory of Gloria Earl who passed away August 3rd. Gloria served as a Stephen Minister for 15 years and many were touched by her caring and serving in the name of Jesus. She is missed by many. The Stephen Ministers hosted the first Sunday Pot Luck at FUMC with a 'make your own sandwich' as the main course. Again many delicious salads and deserts were provided by the congregation. Betty Frank and Virginia Mason had attended a Divorce Care training in Omaha. Betty presented a brief informational recap on Divorce Care and Divorce Care for Kids. The SM then continued on-going training 'Ministering to those experiencing Divorce' from our SM training module.

SEPTEMBER... Plans were discussed for the Celebration of ministries at First Church in October.

OCTOBER... Plans are under way for the Remembrance Service.

NOVEMBER... The 5th annual Service of Remembrance was held Nov 6th at FUMC. This is a remembrance and a candle lighting service open to the public.

DECEMBER... The family Christmas Pot Luck was held at Westridge on Dec. 15th. A special collection was taken for Wesley Center and the Crisis Nursery. Dixie Lederer and Lorraine Naslund will be leading the study "Broken to Peace" that will start in January. In 2011 the Stephen Ministers have logged 255 hospital visits, had 18 SM active in communion during monthly services, care center services or taking out home communion. We shared 18 "Journeying Through Grief" sets with those who have lost loved ones from the Church community plus several to relatives and friends. There were 13 care receivers receiving one-on-one support. We thank you all for your prayers and support of the Stephen Ministry in the Norfolk Parish. God Bless You All! Betty Frank SM Coordinator

CHILDREN'S MINISTRIES

Rotation Sunday School -(Preschool-6th grade) Our children are finishing up a study on the topics of Anger Management and Peace, and will be studying Daniel in the month of February. There will be activities around the stories of the lion's den, the fiery furnace and others. Coming in March is a study of the Beatitudes and the Shema. We need some adults to step up starting in March, April and May to lead our children in these studies and activities. See the list below, check your calendar, and volunteer today. Thank you!

Mar 4-May 13 Shepherd for Preschool and Kind/Ist Grade

Mar 4-25 SS Rotation Leaders for Video, & Music/Movement

Apr 1-29 (no SS Apr 8) SS Rotation Leaders for Art, Science & Games

May 6 & 13 SS Rotation Leaders for 2 centers (your choice)

Program Committees Wish List If you have one of the items below to donate, or if you would like to donate monies to help us purchase something on our wish list, please indicate this on your gift or contact Cheri for more information.

- New Classroom Bibles (*new \$7 each if we can order in bulk by the end of Feb!*)
- 2 to 4 tall bar stools in excellent condition for youth classroom
- New set of Rhythm Instruments for children and worship use (new \$75-100)
- New Classroom Chairs for Youth (new \$50 each)
- Large 4 x 8 bulletin boards for Youth area (gently used or new at \$185 each)
- 24-27" flat screen monitor (gently used or new \$150-200)

UMCOR Early Response Team Basic Course to be held at Hastings

Grace UMC

A tornado strikes. You say: I want to go help, but HOW?

An UMCOR Training to be held Saturday, Feb. 25, will give you the knowledge, skills and certification to make it possible for you to respond quickly to a disaster with other United Methodists.

This basic training will be held at Hastings Grace United Methodist Church. The eight-hour training led by UMCOR personnel will begin at 9 a.m.; registration and coffee will be available from 8-9 a.m. The cost is \$10, which covers snacks and lunch. Please note that this is not a Volunteers in Mission (VIM) training. Please know that you will also need Safe Sanctuary certification in order to participate. That process is available on the Conference website at www.umcneb.org/safesanctuaries.

The mission of an early response team is to provide a caring presence in the aftermath of a disaster, under very specific guidelines that enable a team to be productive and caring while causing no further harm or being a burden to the affected community. Classes are taught by authorized UMCOR trainers, and team members are given ID badges as evidence of training.

Topics covered in the class include the who, what, when, where and how of doing ministry, as well as hands on experience in the specific tasks that early responders are expected to accomplish. Recertification classes for Early Response Team Members are also available.

YOUTH MINISTRIES

Senior High “Souper Bowl” Activity

Students 9th-12th grade are invited to a “Souper Bowl” party hosted at Katarina Godfrey’s home at 1213 Sunnydell, Norfolk, NE, on February 5th starting at 4:30 PM. Parents are asked to drop off and pick up their youth at the conclusion of the Super Bowl at this address. There will be several adults there to help out! Watch the Super Bowl, play games, air hockey, foosball, etc. Pizza and pop will be provided! **Cost of admission:** *Bring 2 cans of soup or other canned items for the Food Pantry and a snack to share!*

Confirmation

The Confirmation students have been studying lessons on the topic of “Living a Holy Life” and are currently studying the concepts of rejecting evil in the world, sin, and repentance. Please pray for our students as they work toward their decisions about their faith and joining the United Methodist Church this spring.

SNDY

SNDY (Sorry, Not Done Yet) is our Sr. High class that meets at 9:45 pm Sundays. If you are a 9th-12th grader, you are welcome anytime. This group is now meeting in the new classroom in Fellowship Hall. Contact Eric Hansen or Deb Beutler for more information.

Coming in March! Midnight Madness!!

UMC Elkhorn Valley District Lock-In for all 7th through 12th Graders

Games and group activities, swimming, food, movies, and more.

March 23-24th 10:00 PM on Friday – 7:00 AM on Saturday

Wayne State College

\$10 registration fee per youth or adult

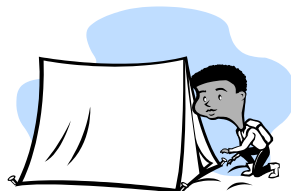
We need 1 adult sponsor for every 8 youth attending. If you are an adult sponsor/driver, we will pay your registration fee.

For a registration form, contact Cheri at the church office or see your SNDY or Confirmation teacher.

Registration Now Available for Nebraska UM Camps!

Registration has begun at all three of our Nebraska UM Camps. You can visit each site on the web at www.campcomeca.com, www.campfontanelle.com, and www.norwesca.org. The 2012 “The Secrets of the Kingdom – The Parables of Jesus” summer brochures are also available at your United Methodist churches. Brochures inserts with registration forms were mailed in the Winter UM Messenger in January 2012. To get your first choice of the program offerings, pick up a brochure or go to www.umcneb.org/camps today. If you have any questions or would like a brochure mailed, please contact Comeca at 308-784-2808, Fontanelle at 402-478-4296, or Norwesca at 308-432-3872. Registration online begins February 1st.

Preschoolers and kindergarteners attend Camp Fontanelle with a trusted adult(s) for 24 hours at Guardian Angel camp. 1st and 2nd graders also attend with a trusted adult(s) for 48 hours. **Camp Fontanelle is offering 50% off for all registrations for Guardian Angel and Sonshine campers registered by March 31 BY MAIL ONLY.** Registration/health forms are available at www.campfontanelle.com under the “Register for Camp” link.



*For surely I know the plans I have for you, says the Lord...
To give you a future with hope.
Jeremiah 29:11*

Church Office
406 W. Phillip Ave
Norfolk, NE 68701
(402)371-2785
(402)371-2783

~ First United Methodist
Church ~

*Open Hearts,
Open Minds,
Open Doors*



1ST SUNDAY LUNCHEON
THE FIRST SUNDAY POTLUCK WILL BE AN OLD FASHION POTLUCK
ON **FEBRUARY 5TH**. PLEASE BRING A MEAT DISH AND SOMETHING
TO GO WITH IT. BRING YOUR OWN TABLE SETTING, TOO. WE ARE
LOOKING FOR PEOPLE TO SET UP AND CLEAN UP AS NO ONE HAS
SIGNED UP TO HOST. PLEASE CALL THE CHURCH OFFICE IF YOU
WOULD LIKE TO HELP OUT. THANK YOU.

Nebraska 68701-5298
Postmaster: Send Address Correction to:
First United Methodist Church
406 W. Phillip Ave.,
Norfolk, NE 68701
Published Monthly

Periodicals Paid at Norfolk
Norfolk, NE 68701
USPS 619-860
January 27, 2012